

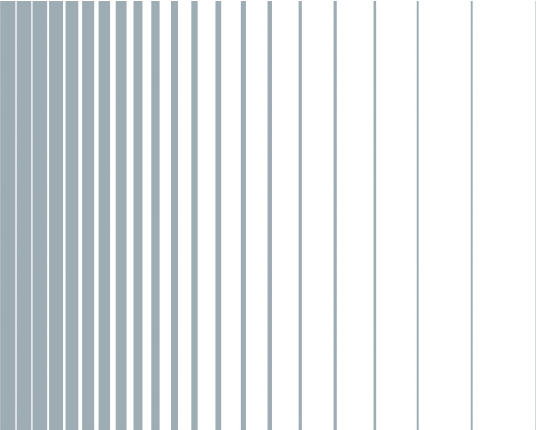
R&S®FSV-K54

EMI Measurement Application

User Manual



1176.7555.02 – 03



Test & Measurement

User Manual

This manual covers the following products:

- R&S FSV-K54 (1310.0425.02)

for the R&S FSVR Realtime Spectrum Analyzer and the R&S FSV/FSVA Signal and Spectrum Analyzer. This manual describes the following R&S FSV/FSVA models with firmware version 3.00 and higher:

- R&S®FSV4 (1321.3008K04)
- R&S®FSVA4 (1321.3008K05)
- R&S®FSV7 (1321.3008K07)
- R&S®FSVA7 (1321.3008K08)
- R&S®FSV13 (1321.3008K13)
- R&S®FSVA13 (1321.3008K14)
- R&S®FSV30 (1321.3008K30)
- R&S®FSVA30 (1321.3008K31)
- R&S®FSV40 (1321.3008K39/1321.3008K40)
- R&S®FSVA40 (1321.3008K41)

It also applies to the following R&S®FSV models. However, note the differences described in [Chapter 1.1, "Notes for Users of R&S FSV 1307.9002Kxx Models"](#), on page 5.

- R&S®FSV3 (1307.9002K03)
- R&S®FSV7 (1307.9002K07)
- R&S®FSV13 (1307.9002K13)
- R&S®FSV30 (1307.9002K30)
- R&S®FSV40 (1307.9002K39/1307.9002K40)

© 2015 Rohde & Schwarz GmbH & Co. KG
Mühldorfstr. 15, 81671 München, Germany
Phone: +49 89 41 29 - 0
Fax: +49 89 41 29 12 164
Email: info@rohde-schwarz.com
Internet: www.rohde-schwarz.com

Subject to change – Data without tolerance limits is not binding.

R&S® is a registered trademark of Rohde & Schwarz GmbH & Co. KG.

Trade names are trademarks of the owners.

The following abbreviations are used throughout this manual: R&S®FSV/FSVA is abbreviated as R&S FSV.

Contents

1	Preface.....	5
1.1	Notes for Users of R&S FSV 1307.9002Kxx Models.....	5
2	Introduction.....	6
3	Measurement Background.....	7
3.1	Selecting a Detector.....	7
3.2	Selecting the Measurement Bandwidth.....	10
3.3	Setting the Number of Sweep Points.....	11
3.4	Controlling V-Networks (LISN).....	11
3.5	Using Transducer Factors.....	12
3.6	Performing a Peak Search.....	12
3.7	Measuring at the Marker Position.....	14
3.8	Evaluating the Results.....	14
4	Configuring and Performing the Measurement.....	16
4.1	Measurement Configuration.....	16
4.2	Peak Search.....	18
4.3	Final Evaluation.....	20
5	Remote Commands for EMI Measurements.....	23
5.1	Configuring the Measurement.....	23
5.2	Performing a Peak Search.....	27
5.3	Evaluating the Results.....	30
	List of Commands.....	35
	Index.....	36

1 Preface

1.1 Notes for Users of R&S FSV 1307.9002Kxx Models

Users of R&S FSV 1307.9002Kxx models should consider the following differences to the description of the newer R&S FSV/FSVA 1321.3008Kxx models:

- Functions that are based on the Windows7 operating system (e.g. printing or setting up networks) may have a slightly different appearance or require different settings on the Windows XP based models. For such functions, refer to the Windows documentation or the documentation originally provided with the R&S FSV instrument.
- The R&S FSV 1307.9002K03 model is restricted to a maximum frequency of 3 GHz, whereas the R&S FSV/FSVA1321.3008K04 model has a maximum frequency of 4 GHz.
- The bandwidth extension option R&S FSV-B160 (1311.2015.xx) is not available for the R&S FSV 1307.9002Kxx models. The maximum usable I/Q analysis bandwidth for these models is 28 MHz, or with option R&S FSV-B70, 40 MHz.

2 Introduction

The R&S FSV-K54 EMI measurement application is a firmware option that adds functionality to perform EMI measurements to the base unit. With its features, the R&S FSV-K54 is suitable for measurements according to commercial and military EMC standards. The functionality of the option is particularly useful in research and development.

The firmware option is available for the R&S FSVR realtime spectrum analyzer and the R&S FSV signal and spectrum analyzer.

The R&S FSV-K54 features

- EMI measurement marker functionality
- marker demodulation (with option R&S FSV-B3)
- measurement bandwidths and detectors for EMI measurements
- logarithmic scaling of the frequency axis
- additional predefined limit lines for EMC standards
- predefined transducer factors
- LISN control (with option R&S FSV-B5)

The R&S FSV-K54 integrates its functionality into the measurement and marker functions that are available in spectrum mode. This manual describes the functionality that is part of the R&S FSV-K54 only. All functions not discussed in this manual work as described in the documentation for the R&S FSVR or the R&S FSV (e.g. frequency or amplitude settings).

The latest version is available for download at the [product homepage](http://www2.rohde-schwarz.com/product/FSVR.html) (<http://www2.rohde-schwarz.com/product/FSVR.html>).

The latest version is available for download at the [product homepage](http://www2.rohde-schwarz.com/product/FSV.html) (<http://www2.rohde-schwarz.com/product/FSV.html>).

3 Measurement Background

EMI measurements can be very time-consuming, especially if weighting detectors are required for the measurement. In addition, EMC testing often requires various procedures to locate local EMI maxima. Such procedures are, for example, movements of an absorbing clamp, variations in the height of the test antenna or the rotation of the DUT.

Covering all test setups with one of the (slow) EMI weighting detectors over the required frequency range would lead to very high measurement times.

Splitting the measurement procedure into several stages, however, can eliminate this problem.

The first stage, or peak search, is used to get a rough idea about the location of peak powers that may indicate interference over the required frequency range. You can use a detector that allows for a fast sweep time, e.g. the peak detector.

During the second stage, or final evaluation, the R&S FSV/FSVA performs the actual EMC test, with detectors designed for and required by EMC standards. To keep measurement times brief, the R&S FSV/FSVA performs a measurement only on frequencies you have marked with a marker or delta marker. You can assign a different detector to every marker and thus test a particular frequency easily for compliance.

3.1	Selecting a Detector	7
3.2	Selecting the Measurement Bandwidth	10
3.3	Setting the Number of Sweep Points	11
3.4	Controlling V-Networks (LISN)	11
3.5	Using Transducer Factors	12
3.6	Performing a Peak Search	12
3.7	Measuring at the Marker Position	14
3.8	Evaluating the Results	14

3.1 Selecting a Detector

The R&S FSV-K54 adds new detectors to those already available with the base unit. The additional detectors are especially designed for and required by EMI applications.

Positive and negative peak detector

The maximum and minimum peak detectors displays the maximum and minimum signal level that was detected during the specified dwell time.

Regarding measurement time,

- you can use the shortest time possible when measuring unmodulated signals

- you should set a time that is long enough to capture at least one complete pulse when measuring pulsed signals

The minimum and maximum peak detectors are already available with the base unit.

Average detector

The average detector displays the average signal level of the samples that were collected during the specified dwell time.

Regarding measurement time,

- you can use shortest time possible when measuring unmodulated signals
- you should set a time that is long enough to capture several complete pulses (at least 10) when measuring pulsed signals
- you should be aware that the time is determined by the lowest modulation frequency to be averaged

The average detector is already available with the base unit.

RMS detector

The RMS detector evaluates the root mean square (RMS) value over the specified dwell time and displays the resulting value. The integration time is the specified dwell time.

Regarding measurement time, you can follow the guidelines of the average detector.

The RMS detector is already available with the base unit.

Sample detector

The sample detector displays the last value from the samples allocated to a pixel.

The sample detector is used for noise or phase noise marker calculation. However, it is unreliable if the displayed span is much greater than the resolution bandwidth or if the tuning steps of the local oscillator are too large.

The sample detector is available in spectrum or real-time mode.

Quasipeak detector (R&S FSV-K54 only)

The quasipeak detector displays the maximum signal level weighted to CISPR 16-1-1 that was detected during the dwell time.

Regarding measurement time,

- you should select a dwell time of at least 1 second when measuring unknown signals. This value makes sure that pulses down to a frequency of 5 Hz are weighted correctly.
- you can select a shorter time when measuring known signals as the signal level does not change during the sweep.

After an internal switch, the R&S FSV/FSVA waits until the measurement result has stabilized before it starts the actual measurement.

The quasipeak detector is available with the R&S FSV-K54.

CISPR Average detector (R&S FSV-K54 only)

The CISPR Average detector displays a weighted average signal level according to CISPR 16-1-1.

The average value according to CISPR 16-1-1 is the maximum value of the linear average value that was detected during the specified dwell time.

The CISPR Average detector is applied to measure pulsed sinusoidal signals with a low pulse frequency, for example. It is calibrated with the RMS value of an unmodulated sinusoidal signal. The average value is determined by lowpass filters of the 2nd order (the simulation of a mechanical instrument).

The filter bandwidth and time constants of the detector are coupled to the receiver frequency.

	Band A	Band B	Band C/D	Band E
Frequency range	<150 kHz	150 kHz to 30 MHz	30 MHz to 1 GHz	>1 GHz
IF bandwidth	200 Hz	9 kHz	120 kHz	1 MHz
Time constant of instrument	160 ms	160 ms	100 ms	100 ms

Regarding measurement time,

- you should select a dwell time of at least 1 second when measuring unknown signals. This time makes sure that pulses down to a frequency of 5 Hz are weighted correctly.
- you should select a long time for measurement on pulsed signals or signals that fluctuate slowly.
- you can select a short time when measuring unmodulated signals or signals with a high modulation frequency.

When you change the receiver frequency or the attenuation, the R&S FSV/FSVA waits until the the lowpass filter has settled before starting the measurement. The measurement time in that case depends on the resolution bandwidth and the characteristics of the signal.

The CISPR Average detector is available with the R&S FSV-K54.

RMS Average detector (R&S FSV-K54 only)

The RMS Average detector is a combination of the RMS detector (for pulse repetition frequencies above a corner frequency) and the Average detector (for pulse repetition frequencies below the corner frequency). It thus achieves a pulse response curve with the following characteristics: 10 dB/decade above the corner frequency and 20 dB/decade below the corner frequency. The average value is determined by lowpass filters of the 2nd order (simulation of a mechanical instrument).

The detector is used, for example, to measure broadband emissions and may replace the quasipeak detector in the future.

	Band A	Band B	Band C/D	Band E
Frequency range	<150 kHz	150 kHz to 30 MHz	30 MHz to 1 GHz	>1 GHz
IF bandwidth	200 Hz	9 kHz	120 kHz	1 MHz
Time constant of instrument	160 ms	160 ms	100 ms	100 ms
Corner frequency	10 Hz	100 Hz	100 Hz	1 kHz

Regarding measurement time, you can follow the guidelines of the CISPR Average detector.

The RMS Average detector is available with the R&S FSV-K54.

3.2 Selecting the Measurement Bandwidth

EMI testing require resolution filters with a 6 dB bandwidth. The R&S FSV/FSVA adds the following bandwidths that comply to civil and military standards to those already available with the base unit:

Commercial (CISPR, FFC etc.)

- 200 Hz
- 9 kHz
- 120 kHz
- 1 MHz

Military (MIL Std)

- 10 Hz
- 100 Hz
- 1 kHz
- 10 kHz
- 100 kHz
- 1 MHz

If you select the bandwidth with the "Res BW CISPR" or "Res BW Mil Std" softkey, the R&S FSV/FSVA automatically selects the 6 dB EMI filter.

If you select the bandwidth with the "Res BW" softkey, you have to select one of the 6 dB filters (commercial or military) in the "Bandwidth" menu first to access those bandwidths.

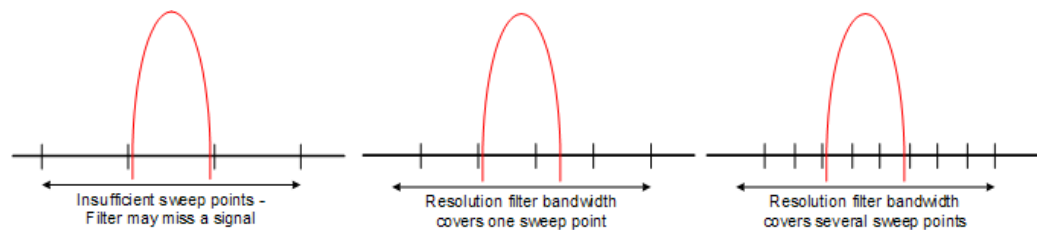
You have to select the bandwidth with the rotary knob or enter the bandwidth directly with the alphanumeric keypad.

If you are using the Quasipeak, CISPR Average or Average RMS detector, the bandwidth is fixed depending on the frequency. For more information see [Chapter 3.1, "Selecting a Detector"](#), on page 7.

3.3 Setting the Number of Sweep Points

The number of sweep points defines the number of measurement values collected during one sweep. Thus, increasing the sweep points also increases the accuracy of the results regarding the frequency resolution.

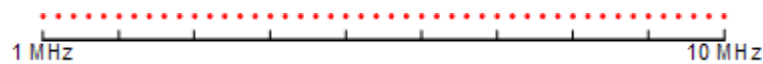
Because EMI measurements often cover a large frequency range you should define an adequate number of sweep points, especially when performing the measurement on a logarithmic axis. Like on a linear axis, the distance from one sweep point to the next is calculated graphically on a logarithmic axis, and is not based on the frequency itself. Thus, the frequency resolution between two sweep points deteriorates with higher frequencies.



The resolution bandwidth should cover at least one sweep point (more is better). If this condition is not met, signals or interferences could be missed during final evaluation of narrowband interferers.

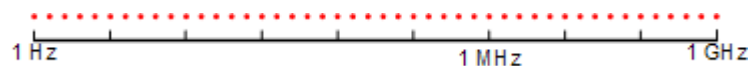
Example:

Linear axis:



In case of a linear axis, the distance between the sweep points is equal, e.g. 200 kHz.

Logarithmic axis:



In case of a logarithmic axis, the distance between sweep points is variable. In the spectrum from 10 Hz to 100 Hz, the distance is a few Hz. Between 100 MHz and 1 GHz, the distance is several MHz.

The R&S FSV/FSVA supports a maximum of 200000 sweep points. This number is based on typical bands measured with a single resolution bandwidth. There are sufficient sweep points to make sure that a signal is found when doing the final evaluation. Even when covering 30 MHz to 1 GHz with logarithmic scaling and 120 kHz RBW.

3.4 Controlling V-Networks (LISN)

For measurements with power lines, the R&S FSV-K54 adds functionality to directly control a line impedance stabilization network (LISN).

You can connect the LISN to the userport. The R&S FSV-K54 supports several V-networks.

- Four-line V-networks
 - ESH2-Z5
 - ENV4200
- Two-line V-networks
 - ESH3-Z5
 - ENV216

After selecting the type of network, you can define the phase you want to test for interferences. Phase N and L1 are available for two-line networks. Four-line networks in addition have access to phase L2 and L3. The R&S FSV-K54 allows you to test one phase at a time.

For the ENV 216 network, a 150 kHz high pass filter is available for protection of the input.

Note that LISN control is possible only with option R&S FSV-B5 (Additional Interfaces). Control cables for the various LISNs are available as accessories.

3.5 Using Transducer Factors

The R&S FSV-K54 supports the use of transducers in that it provides functionality to include transducer factors in the test setup. Transducers are devices like antennas, probes or current probes that are connected to the R&S FSV/FSVA to measure interferences or useful signals. The transducer converts the measurand like field strength, current or RFI voltage into a voltage across 50 Ω . During the measurement, the transducer is considered a part of the instrument.

A transducer usually has a frequency-dependent transducer factor that includes the frequency response of the corresponding device. During level measurement, the transducer factor automatically converts the results into the correct unit and magnitude. A transducer factor consists of a maximum of 625 reference values. Each reference value includes frequency, unit and transducer factor.

The R&S FSV-K54 adds several predefined transducer factors. In addition you can also create and edit new and existing transducer factors.

For more information see the documentation of the base unit.

3.6 Performing a Peak Search

The purpose of a peak search is to find signals with a high interference level quickly. Usually the peak search is done with a fast detector like the peak or average detector. The marker peak search is the basis for a possible final evaluation of interferences with the detectors specific to EMI measurements.

You can control markers in the [Marker Configuration](#) dialog box or turn them on with the "Marker <x>" softkey. The results of the peak search are summarized in the [Marker Table](#).

There are two ways to perform a peak search, automatic and manual.

Automatic peak search

By default, the automatic peak search starts as soon as you turn on the EMI measurement marker. During the peak search, the application looks for the strongest peaks in the frequency range you are measuring and positions a marker on those peaks. When a limit line is assigned to the trace, the level difference between the trace and the limit line determines the peak search. The number of peaks it will find during the search depends on the number of markers you have turned on. You can use up to 16 markers simultaneously.

The first marker is always on the most powerful peak while the last marker is always on the least powerful peak. If the application finds a more powerful peak, it will move one of the markers to that position and adjust the order of the other markers.

The application allows you to distribute markers among several traces. If you do so, the marker with the lowest number assigned to a particular trace will be positioned on the most powerful peak of the corresponding trace.

Manual peak search

If you turn the automatic peak search off, you can put the markers manually to any frequency you need more information about. You can change the marker position with the rotary knob, the cursor keys or position it to a particular frequency with the number keys.

Setting markers is the same as setting markers in normal spectrum mode. For more information see the manual of the base unit.

Searching for peaks over several traces

You can measure on six traces with a different weighting detector simultaneously.

In that case, the application searches for peaks on all traces separately, given that you have assigned at least one marker to that trace.

A typical selection for EMI measurement is to use the peak and the average detector. If the premeasurement is done, the application would look for peaks on the peak trace and the average trace separately so that the distribution of narrowband and wideband sources of interference can be taken into account.

For example, the frequency of the maximum determined with the average detector can be used for the final measurement performed with this detector and the frequency found in the premeasurement carried out with the peak detector is taken for the final measurement using the quasipeak detector.

3.7 Measuring at the Marker Position

Finding peaks with the help of a peak search reduces data to be evaluated and thus measurement time.

The R&S FSV-K54 performs the final evaluation automatically if the EMI measurement marker is turned on. The measurement at the marker frequency starts immediately after the marker has been set. The advantage of an immediate final evaluation is that it eliminates the risk of measurement errors based on frequency drifts of the disturbance signal.

The measurement at the marker frequency may have a different detector during the peak search. This way, the measurement consumes much less time because detectors with a long measurement time are needed only at the critical frequency.

The application also allows you to use multiple detectors for the final evaluation. The advantage of multiple detection is that you will only need one test run to see if the results comply with the limits specified in a standard. You can select and assign detectors for EMI markers in the "[Marker Configuration](#)" on page 18 dialog box.

As EMC tests often require special measurement times, you can also specify a dwell time for the measurement with the EMI markers.

The application shows the results in the [Marker Table](#).

Defining a Dwell Time for the Final Measurement

The dwell time defines for how long the R&S FSV/FSVA measures the signal at the frequencies of the marker positions. Thus the dwell time defines the amount of data that is included in the detection of the displayed results. As each detector needs a different period of time to fully charge and discharge, the minimum dwell time should not be shorter than the slowest detector in use.

3.8 Evaluating the Results

The R&S FSV-K54 provides functionality to evaluate the results.

Marker Demodulation

The R&S FSV/FSVA is able to demodulate AM and FM signals for acoustic tests and monitoring purposes. When the demodulator is active, the R&S FSV-K54 demodulates the signal for all EMI marker positions. The demodulation begins when the marker is turned on. You can listen to the results during the measurement with headphones or with the internal speaker.

In case of frequency domain measurements, the duration of the demodulation at each marker position is limited by the dwell time of the EMI measurement marker. Measurements in the time domain result in continuous demodulation of the signal on the center frequency.

Note that marker demodulation is only available with option R&S FSV-B3 (AM/FM Audio Demodulator).

Limit Lines

General limit line functionality is already available for the base unit. The base unit also provides various predefined limit lines that you can use for various applications.

For easier evaluation of EMI measurement results, the R&S FSV-K54 adds additional predefined limit lines to those already present. The limit lines specific for EMI measurement have been designed in compliance with several EMC standards.

When you are using limit lines in combination with EMI measurements, note that the limit check does not respond to the marker level and position. That means that you won't necessarily see if a peak violates a limit. Instead it only responds if the trace itself violates the limit line.

For more information on using limit lines see the documentation of the base unit.

4 Configuring and Performing the Measurement

This chapter contains a description of all functions available with the EMI measurement application.

4.1 Measurement Configuration.....	16
4.2 Peak Search.....	18
4.3 Final Evaluation.....	20

4.1 Measurement Configuration

The reference section contains an overview of all functions that are part of the chapter and lists the associated elements of the user interface.

Filter Type

Opens a submenu to select the filter type.

The submenu contains the following softkeys:

- Normal (3 dB)
- CISPR (6 dB)
- MIL Std (6 dB)
For more information see [Chapter 3.2, "Selecting the Measurement Bandwidth"](#), on page 10.
- Channel
- RRC
- 5-Pole (not available for sweep type "FFT")

Remote command:

`[SENSe:]BANDwidth|BWIDth[:RESolution]:TYPE` on page 25

Res BW CISPR / CISPR (6 dB)

Selects the measurement bandwidth for commercial EMC standards according to CISPR.

If you select the bandwidth with the "Res BW CISPR" softkey, the R&S FSV/FSVA automatically changes the filter type to a 6 dB bandwidth.

For more information see [Chapter 3.2, "Selecting the Measurement Bandwidth"](#), on page 10.

Remote command:

Filter type:

`[SENSe:]BANDwidth|BWIDth[:RESolution]:TYPE` on page 25

Filter bandwidth:

`[SENSe:]BANDwidth|BWIDth[:RESolution]` on page 25

Res BW Mil Std / MIL Std (6 dB)

Selects the measurement bandwidths for military EMC standards.

If you select the bandwidth with the "Res BW Mil Std" softkey, the R&S FSV/FSVA automatically changes the filter type to a 6 dB bandwidth.

For more information see [Chapter 3.2, "Selecting the Measurement Bandwidth"](#), on page 10.

Remote command:

Filter type:

`[SENSe:]BANDwidth|BWIDth[:RESolution]:TYPE` on page 25

Filter bandwidth:

`[SENSe:]BANDwidth|BWIDth[:RESolution]` on page 25

Sweep Points

Opens an edit dialog box to enter the number of measured values collected during a single measurement.

For more information see [Chapter 3.3, "Setting the Number of Sweep Points"](#), on page 11.

Remote command:

`[SENSe:]SWEep:POINTs` on page 27

Freq (Lin Log)

Turns logarithmic scaling of the frequency axis on and off.

By default, the frequency axis has linear scaling. Logarithmic scaling of the frequency axis, however, is common for EMI measurements over large frequency ranges as it enhances the resolution of the lower frequencies. On the other hand, high frequencies get more crowded and become harder to distinguish.

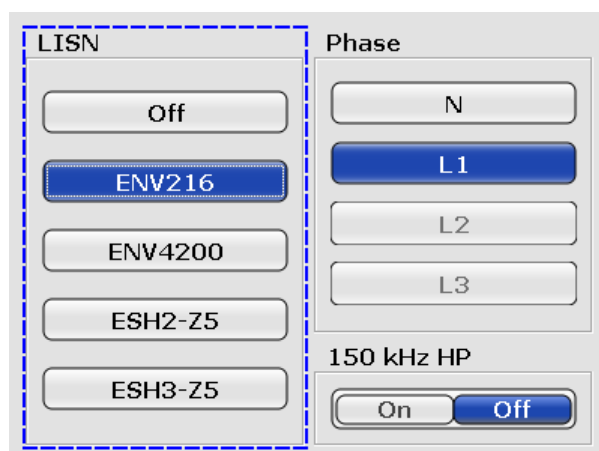
Because it shows the lower frequencies more clearly, logarithmic scaling is used for tests that focus on those frequencies, for example acoustic tests and measurements.

Remote command:

`DISPlay[:WINDow<n>]:TRACe<t>:X:SPACing` on page 23

LISN Control

Opens a dialog box to control a LISN.



The dialog box contains the following elements.

- LISN
Selects the V-network that you have in use. The R&S FSV-K54 supports the following networks:
 - R&S ESH3-Z5 and R&S ENV216 (two-line networks)
 - R&S ESH-Z5, R&S ENV432 and R&S ENV4200 (four-line networks)
- Phase
Selects the phase to be measured. Phase N and L1 are included in all four LISN. Phase L2 and L3 are only included in four-line networks. You can select one phase for a measurement only.
- 150 kHz HP
Turns on a 150 kHz highpass filter. The filter is available for the ENV 216 network only.

For more information see [Chapter 3.4, "Controlling V-Networks \(LISN\)"](#), on page 11.

Remote command:

LISN type:

`INPut:LISN:TYPE` on page 24

Phase:

`INPut:LISN:FILTER:HPASs[:STATE]` on page 24

Highpass filter:

`INPut:LISN:TYPE` on page 24

4.2 Peak Search

The reference section contains an overview of all functions that are part of the chapter and lists the associated elements of the user interface.

Auto Peak Search

Turns the automatic marker peak search on and off.

For more information see [Chapter 3.6, "Performing a Peak Search"](#), on page 12.

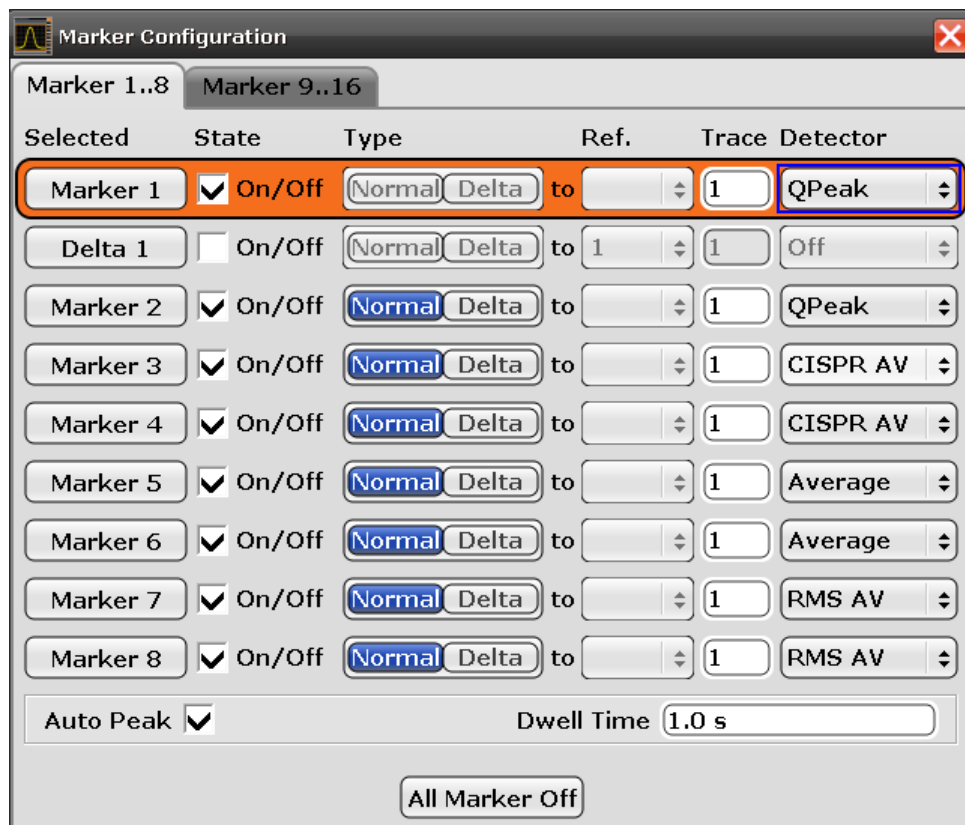
Remote command:

`CALCulate<n>:MARKer<m>:FUNCTION:FMEasurement:PSEarch:AUTO`
on page 29

Marker Configuration

To make the process of configuring markers as easy as possible, the R&S FSV-K54 features a "Marker Configuration" dialog box that contains all marker characteristics necessary to perform successful EMI measurements.

The dialog box is made up out of two tabs. The first tab controls markers 1 to 8, the second tab controls markers 9 to 16.



- **Selected**
Selects one of the markers. The currently selected marker is highlighted in orange color. The label indicates the marker type and its number.
- **State**
Turns the marker on and off.
- **Type**
Selects the marker type.
The first marker always is a normal marker (abbreviated 'N'). Normal markers determine absolute signal levels. In the diagram area, they are drawn as a triangle pointing up (▲).
If you add more markers, these will be delta markers by default (abbreviated 'D'). Delta markers show signal levels in relation to another (normal) marker, by default in relation to the first marker. If necessary, you can still change the reference marker in the "Ref" column. In the diagram area, delta markers are drawn as a triangle pointing down (▼).
When performing EMI measurements however, you usually want to have absolute marker readouts for all markers that you are using.
- **Ref**
Selects the reference marker for delta markers.
By default, the reference marker for all delta markers is the first marker.
This is active only for delta markers.
- **Trace**
Selects the trace number the marker is positioned on.
You can place markers on any of the active traces. The R&S FSV-K54 supports the use of up to four traces.

- **Detector**
Selects the detector for the final measurement.
For more information see [Chapter 3.1, "Selecting a Detector"](#), on page 7.
- **Auto Peak**
Turns automatic peak search for all markers on and off.
For more information see [Chapter 3.6, "Performing a Peak Search"](#), on page 12.
- **Dwell Time**
Sets the dwell time for all markers.
For more information see [Chapter 3.7, "Measuring at the Marker Position"](#), on page 14.
- **All Markers Off**
Turns all markers off.

Remote command:

Reference marker:

`CALCulate<n>:DELTamarker<m>:MREF`

Trace:

`CALCulate<n>:DELTamarker<m>:TRACe` on page 27

`CALCulate<n>:MARKer<m>:TRACe` on page 30

Detector:

`CALCulate<n>:MARKer<m>:FUNction:FMEasurement:DETEctor` on page 28

`CALCulate<n>:DELTamarker<m>:FUNction:FMEasurement:DETEctor`
on page 29

Auto peak:

`CALCulate<n>:MARKer<m>:FUNction:FMEasurement:PSEarch:AUTO`
on page 29

Dwell time:

`CALCulate<n>:MARKer<m>:FUNction:FMEasurement:DWELL` on page 33

All marker off:

`CALCulate<n>:MARKer<m>:AOFF` on page 28

`CALCulate<n>:DELTamarker<m>:AOFF` on page 27

See also the documentation of the base unit for information on how to remotely work with markers in general.

4.3 Final Evaluation

The reference section contains an overview of all functions that are part of the chapter and lists the associated elements of the user interface.

Dwell Time

Sets the dwell time for the EMI marker measurement.

For more information see [Chapter 3.7, "Measuring at the Marker Position"](#), on page 14.

Remote command:

CALCulate<n>:MARKer<m>:FUNCTION:FMEasurement:DWELL on page 33

Marker Table

If more than two markers have been activated, the application adds a marker table to the display below the diagram area. The size of the table depends on the number of markers that are active. It contains the following information for every marker.

EMI Measurement Marker							
Type	Ref	Trace	Frequency	Level	Detector	ΔLimit	Result
N1		1	999.28 MHz	-25.87 dBm	Peak	14.13 dB	-25.87 dBm*
N2		1	925.47 MHz	-47.77 dBm	Peak	-7.77 dB	-47.77 dBm
N3		1	1.07525 GHz	-47.77 dBm	Quasi Peak	-7.77 dB	-47.77 dBm
N4		1	849.493 MHz	-75.28 dBm	Quasi Peak	---	-75.28 dBm
N5		1	1.017366 GHz	-40.45 dBm	Quasi Peak	-0.45 dB	-40.45 dBm

- **Type**
Shows the marker type. The marker type is either a normal marker (N) or delta marker (D).
- **Ref**
Shows the reference marker. Applicable only for delta markers.
- **Trace**
Trace number the marker is positioned on. You can turn on a maximum of six traces at the same time. Each trace has a different color.
- **Frequency**
Frequency of a peak that was detected during the peak search. For normal markers this is an absolute value, for delta markers this is a relative value. The corresponding reference marker for delta markers is indicated in the "Ref" column.
- **Level**
Signal level at the marker position according to the trace detector. For normal markers this is an absolute value, for delta markers this is a relative value. The corresponding reference marker for delta markers is indicated in the "Ref" column. The unit for absolute markers depends on the selected unit. The unit for relative markers is dB.
- **Detector**
Detector that has been assigned to the EMI measurement marker.
- **ΔLimit**
Shows the distance of the marker level to all active limit lines. The order of results depends on the order in that you have loaded the limit lines and is the same as the order in the status register. The result is either a relative value in dB or three dashes (- - -). In case of three dashes the marker is either
 - on a different trace than the limit line or
 - on a horizontal position that is not covered by the limit line.
 The delta limit is shown only if you have assigned a detector to the measurement marker.
- **Result**
Shows the signal level at the marker position according to the detector assigned to the corresponding marker. The result is only displayed after the final measurement is done. The overall measurement time depends on the dwell time. If a limit line is active, the result can have three colors.

- green indicates that the marker has passed the limit check.
- yellow indicates that the marker is in the margins of the limit line.
- red and a star (*) indicate that the marker has failed the limit check.

For more information on limit lines see the documentation of the base unit.

The result is shown only if you have assigned a detector to the measurement marker.

Remote command:

Detector:

Δ Limit:

[CALCulate<n>:MARKer<m>:FUNction:FMEasurement:LIMit<k>:DELTA?](#)
on page 31

[CALCulate<n>:MARKer<m>:FUNction:FMEasurement:LIMit<k>:
CONDition ?](#) on page 31

[CALCulate<n>:DELTAmarker<m>:FUNction:FMEasurement:LIMit<k>:
DELTA?](#) on page 33

[CALCulate<n>:DELTAmarker<m>:FUNction:FMEasurement:LIMit<k>:
CONDition ?](#) on page 32

Result:

[CALCulate<n>:MARKer<m>:FUNction:FMEasurement:RESult?](#) on page 32

[CALCulate<n>:DELTAmarker<m>:FUNction:FMEasurement:RESult?](#)
on page 33

5 Remote Commands for EMI Measurements

This chapter features all remote commands specific to the R&S FSV-K54. It also features remote commands that are available with the base unit, but whose functionality is expanded or modified. For remote commands controlling base unit functionality refer to the documentation of the base unit.

5.1 Configuring the Measurement

CALCulate<n>:MARKer<m>:FUNction:FMEasurement:STATe.....	23
DISPlay[:WINDow<n>]:TRACe<t>:X:SPACing.....	23
INPut:LISN:PHASe.....	24
INPut:LISN:FILTer:HPASs[:STATe]	24
INPut:LISN:TYPE.....	24
[SENSe:]BANDwidth BWIDth[:RESolution].....	25
[SENSe:]BANDwidth BWIDth[:RESolution]:TYPE.....	25
[SENSe:][:WINDow:]DETEctor<trace>[:FUNction].....	26
[SENSe:][:WINDow:]DETEctor<trace>[:FUNction]:AUTO.....	26
[SENSe:]SWEep:POINTS.....	27

CALCulate<n>:MARKer<m>:FUNction:FMEasurement:STATe <State>

This command turns the EMI measurement marker functionality on and off.

Suffix:

<n> irrelevant

<m> irrelevant

Parameters:

<State> **ON | OFF**

DISPlay[:WINDow<n>]:TRACe<t>:X:SPACing <ScalingType>

This command toggles between linear and logarithmic display of the x-axis.

Suffix:

<n> window; For applications that do not have more than 1 measurement window, the suffix <n> is irrelevant.

<t> irrelevant

Parameters:

<ScalingType> LOGarithmic | LINear

LOGarithmic

Selects logarithmic scaling.

LINear

Selects linear scaling.

*RST: LINear

Example: `DISP:TRAC:X:SPAC LOG`
Mode: A, ADEMOD
Manual operation: See "[Freq \(Lin Log\)](#)" on page 17

INPut:LISN:PHASe <Phase>

This command selects the phase of the LISN you want to measure.

Parameters:

<Phase> **L1**
 L2
 L3
 N
 *RST: L1

Example: `INP:LISN:PHAS N`
 Selects the N phase.

Mode: R

INPut:LISN:FILTer:HPASs[:STATe] <State>

This command turns the 150 kHz highpass filter for the ENV216 network on and off.

Parameters:

<State> **ON | OFF**
 value 1 description
 *RST: OFF

Example: `INP:LISN:HPAS ON`
 Turns the filter on.

Mode: R

Manual operation: See "[LISN Control](#)" on page 17

INPut:LISN:TYPE <LISNType>

This command selects the type of network.

Parameters:

<LISNType> **TWOPhase**
 2-Phase networks

FOURphase
 4-Phase networks

ESH3z5

ESH2z5

ENV4200

ENV216

*RST: ---

Example:

INP:LISN:TYPE ESH3z5
 Selects the ESH3z5 network.

Mode:

R

Manual operation: See "[LISN Control](#)" on page 17

[SENSe:]BANDwidth|BWIDTH[:RESolution] <Bandwidth>

This command defines the resolution bandwidth.

In realtime mode, the resolution bandwidth is always coupled to the span. In all other modes, a change of the resolution bandwidth automatically turns the coupling to the span off.

Note that EMI measurements (R&S FSV-K54) provide additional 6 dB bandwidths.

Parameters:

<Bandwidth> refer to data sheet

*RST: (AUTO is set to ON)

Example:

BAND 1 MHz
 Sets the resolution bandwidth to 1 MHz

Manual operation: See "[Res BW CISPR / CISPR \(6 dB\)](#)" on page 16
 See "[Res BW Mil Std / MIL Std \(6 dB\)](#)" on page 17

[SENSe:]BANDwidth|BWIDTH[:RESolution]:TYPE <FilterType>

This command selects the type of resolution filter.

When changing the filter type, the next larger filter bandwidth is selected if the same filter bandwidth is not available for the new filter type.

5 Pole filters are not available when using the sweep type "FFT".

Parameters:

<FilterType>

NORMal

Gaussian filters

CFILter

channel filters

RRC

RRC filters

P5

5 Pole filters

CISPr (PULSe)

6 dB CISPR filter (commercial EMI standards)

6 dB filters are available with firmware option R&S FSV-K54 (EMI measurements).

Note: when the filter type is queried, the CISPR filter returns 'PULS'.

MIL

6 dB MIL Std filter (military EMI standard)

6 dB filters are available with firmware option R&S FSV-K54 (EMI measurements).

*RST: NORMal

Example:

BAND:TYPE NORM

Manual operation:See ["Filter Type"](#) on page 16See ["Res BW CISPR / CISPR \(6 dB\)"](#) on page 16See ["Res BW Mil Std / MIL Std \(6 dB\)"](#) on page 17**[SENSe:][WINDow:]DETEctor<trace>[:FUNCTion] <Function>**

This command selects the detector for the data acquisition in the selected trace.

Suffix:

<trace>

1...6

Selects the trace.

<trace>

1...6

trace

Parameters:

<Function>

APEak | NEGative | POSitive | SAMPlE | RMS | AVERAge |
QPEak | CAVERage | CRMS

*RST: APEak

Example:

DET POS

Sets the detector to "positive peak".

[SENSe:][WINDow:]DETEctor<trace>[:FUNCTion]:AUTO <State>

This command either couples the detector to the current trace setting or turns coupling off.

Suffix:
 <trace> 1...6
 trace

Parameters:
 <State> ON | OFF
 *RST: ON

Example: DET:AUTO OFF

[SENSe:]SWEep:POINTs <NumberPoints>

This command defines the number of measurement points to be collected during one sweep.

Parameters:
 <NumberPoints> Range: 101 to 200000
 *RST: 691

Example: SWE:POIN 251

Manual operation: See "[Sweep Points](#)" on page 17

5.2 Performing a Peak Search

CALCulate<n>:DELTaMarker<m>:AOFF	27
CALCulate<n>:DELTaMarker<m>:TRACe	27
CALCulate<n>:MARKer<m>:AOFF	28
CALCulate<n>:MARKer<m>:FUNctio:n:FMEasureme:nt:DETEctor	28
CALCulate<n>:DELTaMarker<m>:FUNctio:n:FMEasureme:nt:DETEctor	29
CALCulate<n>:MARKer<m>:FUNctio:n:FMEasureme:nt:PSEarch:AUTO	29
CALCulate<n>:MARKer<m>:TRACe	30

CALCulate<n>:DELTaMarker<m>:AOFF

This command turns all active delta markers off.

Suffix:
 <n> Selects the measurement window.
 <m> Selects the marker.

Example: CALC:DELT:AOFF
 Switches off all delta markers.

Manual operation: See "[Marker Configuration](#)" on page 18

CALCulate<n>:DELTaMarker<m>:TRACe <TraceNumber>

This command selects the trace a delta marker is positioned on.

The corresponding trace must have a trace mode other than "Blank".

In the persistence spectrum result display, the command also defines if the delta marker is positioned on the persistence trace or the maxhold trace.

Suffix:

<n> Selects the measurement window.

<m> Selects the marker.

Parameters:

<TraceNumber> 1 ... 6
Trace number the marker is positioned on.

MAXHold

Defines the maxhold trace as the trace to put the delta marker on.

This parameter is available only for the persistence spectrum result display.

WRITE

Defines the persistence trace as the trace to put the delta marker on.

This parameter is available only for the persistence spectrum result display.

Example:

`CALC:DELT3:TRAC 2`
Assigns delta marker 3 to trace 2.

Manual operation: See "[Marker Configuration](#)" on page 18

CALCulate<n>:MARKer<m>:AOFF

This command all markers off, including delta markers and marker measurement functions.

Suffix:

<n> Selects the measurement window.

<m> depends on mode
irrelevant

Example:

`CALC:MARK:AOFF`
Switches off all markers.

Usage: Event

Manual operation: See "[Marker Configuration](#)" on page 18

CALCulate<n>:MARKer<m>:FUNctioN:FMEasuremeNt:DETEctor <Detector>

This command selects the detector for a specific marker during the final measurement.

If the marker hasn't been active yet, the command also turns the marker on.

Suffix:

<n> irrelevant

<m> marker

Parameters:

<Detector>	OFF turns the marker off
	AVER average detector
	CAV CISPR Average detector
	CRMS RMS Average detector
	POS maximum peak detector
	QPE quasipeak detector
*RST:	OFF

Manual operation: See "[Marker Configuration](#)" on page 18

CALCulate<n>:DELTaMarker<m>:FUNCTION:FMEasurement:DETECTOR <Detector>

This command selects the detector for a specific deltamarker during the final evaluation.

If the deltamarker hasn't been active yet, the command also turns the deltamarker on.

Suffix:

<n>	irrelevant
<m>	deltamarker

Parameters:

<Detector>	OFF turns the deltamarker off
	AVER average detector
	CAV CISPR Average detector
	CRMS RMS Average detector
	POS maximum peak detector
	QPE quasipeak detector
*RST:	OFF

Manual operation: See "[Marker Configuration](#)" on page 18

CALCulate<n>:MARKer<m>:FUNCTION:FMEasurement:PSEarch:AUTO

This command initiates a marker peak search.

Instead of the syntax element PSEarch you can also use PEAKsearch.

Suffix:

<n> irrelevant

<m> irrelevant

Usage: Event

Manual operation: See "Auto Peak Search" on page 18
See "Marker Configuration" on page 18

CALCulate<n>:MARKer<m>:TRACe <Trace>

This command selects the trace a marker is positioned on.

The corresponding trace must have a trace mode other than "Blank".

If necessary, the corresponding marker is switched on prior to the assignment.

In the persistence spectrum result display, the command also defines if the marker is positioned on the persistence trace or the maxhold trace.

Suffix:

<n> Selects the measurement window.

<m> depends on mode
Selects the marker.

Parameters:

<Trace> 1 ... 4
Trace number the marker is positioned on.

MAXHold

Defines the maxhold trace as the trace to put the delta marker on.

This parameter is available only for the persistence spectrum result display.

WRITE

Defines the persistence trace as the trace to put the delta marker on.

This parameter is available only for the persistence spectrum result display.

Example: CALC:MARK3:TRAC 2
Assigns marker 3 to trace 2.

Manual operation: See "Marker Configuration" on page 18

5.3 Evaluating the Results

CALCulate<n>:MARKer<m>:FUNCTion:FMEasurement:LIMit<k>:CONDition ?.....	31
CALCulate<n>:MARKer<m>:FUNCTion:FMEasurement:LIMit<k>:DELTA?.....	31
CALCulate<n>:MARKer<m>:FUNCTion:FMEasurement:RESult?.....	32

CALCulate<n>:DELTamarker<m>:FUNCTion:FMEasurement:LIMit<k>:CONDition ?.....	32
CALCulate<n>:DELTamarker<m>:FUNCTion:FMEasurement:LIMit<k>:DELTA?.....	33
CALCulate<n>:MARKer<m>:FUNCTion:FMEasurement:DWELI.....	33
CALCulate<n>:DELTamarker<m>:FUNCTion:FMEasurement:RESult?.....	33

CALCulate<n>:MARKer<m>:FUNCTion:FMEasurement:LIMit<k>:CONDition ? <Condition>

This command queries the condition of a marker position in relation to a certain limit line.

Suffix:

<n>	irrelevant
<m>	1...16 marker
<k>	1...8 limit line

Return values:

<Condition>	0 The marker has passed the limit check.
	1 The marker is inside the margins of a limit line.
	2 The marker has failed the limit check.

Example:

CALC:MARK1:FUNC:FME:LIM2:COND?
Queries the condition of marker 1 in relation to limit line 2.

Usage:

Query only

Manual operation: See "[Marker Table](#)" on page 21

CALCulate<n>:MARKer<m>:FUNCTion:FMEasurement:LIMit<k>:DELTA? <Amplitude>

This command queries the vertical distance from the marker position to the limit line. The unit is dB.

If the marker has been assigned to a different trace than the limit line, the command returns -200.

Suffix:

<n>	irrelevant
<m>	1...16 marker
<k>	1...8 limit line

Return values:

<Amplitude>	Vertical distance to the limit line in dB.
-------------	--

Example: `CALC:MARK3:FUNC:FME:LIM2:DELT?`
Queries the distance of marker 3 to the second limit line.

Usage: Query only

Manual operation: See "[Marker Table](#)" on page 21

CALCulate<n>:MARKer<m>:FUNCTION:FMEasurement:RESult? <Result>

This command queries the result of the EMI measurement at the marker position.

Suffix:

<n> irrelevant

<m> 1...16
marker

Return values:

<Result> Power level. The unit depends on the one you have currently set.

Example: `CALC:MARK1:FUNC:FME:RES?`
Queries the result of marker 1.

Usage: Query only

Manual operation: See "[Marker Table](#)" on page 21

CALCulate<n>:DELTaMarker<m>:FUNCTION:FMEasurement:LIMit<k>:CONDition ? <Condition>

This command queries the condition of a deltamarker position in relation to a certain limit line.

Suffix:

<n> irrelevant

<m> 1...16
deltamarker

<k> 1...8
limit line

Return values:

<Condition> **0**
The deltamarker has passed the limit check.

1
The deltamarker is inside the margins of a limit line.

2
The deltamarker has failed the limit check.

Example: `CALC:DELT2:FUNC:FME:LIM2:COND?`
Queries the condition of deltamarker 2 in relation to limit line 2.

Usage: Query only

Manual operation: See "[Marker Table](#)" on page 21

CALCulate<n>:DELTamarker<m>:FUNction:FMEasurement:LIMit<k>:DELTa?

This command queries the vertical distance from the deltamarker position to the limit line. The unit is dB.

If the deltamarker has been assigned to a different trace than the limit line, the command returns -200.

Suffix:

<n>	irrelevant
<m>	1...16 deltamarker
<k>	1...8 limit line

Return values:

<Amplitude> Vertical distance to the limit line in dB.

Example:

CALC:DELT3:FUNC:FME:LIM2:DELT?

Queries the distance of deltamarker 3 to the second limit line.

Usage:

Query only

Manual operation: See "[Marker Table](#)" on page 21

CALCulate<n>:MARKer<m>:FUNction:FMEasurement:DWELI <Time>

This command defines the dwell time during the final measurement.

Suffix:

<n>	irrelevant
<m>	irrelevant

Parameters:

<Time> Range: min value to max value
*RST: 1 s
Default unit: seconds

Manual operation: See "[Marker Configuration](#)" on page 18
See "[Dwell Time](#)" on page 20

CALCulate<n>:DELTamarker<m>:FUNction:FMEasurement:RESult? <Result>

This command queries the result of the EMI measurement at the deltamarker position.

Suffix:

<n>	irrelevant
<m>	1...16 marker

Return values:

<Result> Power level in dB related to the reference marker you have set for that delta marker.

Example:

```
CALC:DELT3:FUNC:FME:RES?  
Queries the result of delta marker 3.
```

Usage:

Query only

Manual operation: See "[Marker Table](#)" on page 21

List of Commands

[SENSe:][WINDow:]DETEctor<trace>[:FUNction].....	26
[SENSe:][WINDow:]DETEctor<trace>[:FUNction]:AUTO.....	26
[SENSe:]BANDwidth BWIDth[:RESolution].....	25
[SENSe:]BANDwidth BWIDth[:RESolution]:TYPE.....	25
[SENSe:]SWEep:POINts.....	27
CALCulate<n>:DELTAmarker<m>:AOFF.....	27
CALCulate<n>:DELTAmarker<m>:FUNction:FMEasurement:DETEctor.....	29
CALCulate<n>:DELTAmarker<m>:FUNction:FMEasurement:LIMit<k>:CONDition ?.....	32
CALCulate<n>:DELTAmarker<m>:FUNction:FMEasurement:LIMit<k>:DELTA?.....	33
CALCulate<n>:DELTAmarker<m>:FUNction:FMEasurement:RESult?.....	33
CALCulate<n>:DELTAmarker<m>:TRACe.....	27
CALCulate<n>:MARKer<m>:AOFF.....	28
CALCulate<n>:MARKer<m>:FUNction:FMEasurement:DETEctor.....	28
CALCulate<n>:MARKer<m>:FUNction:FMEasurement:DWELI.....	33
CALCulate<n>:MARKer<m>:FUNction:FMEasurement:LIMit<k>:CONDition ?.....	31
CALCulate<n>:MARKer<m>:FUNction:FMEasurement:LIMit<k>:DELTA?.....	31
CALCulate<n>:MARKer<m>:FUNction:FMEasurement:PSEarch:AUTO.....	29
CALCulate<n>:MARKer<m>:FUNction:FMEasurement:RESult?.....	32
CALCulate<n>:MARKer<m>:FUNction:FMEasurement:STATE.....	23
CALCulate<n>:MARKer<m>:TRACe.....	30
DISPlay[:WINDow<n>]:TRACe<t>:X:SPACing.....	23
INPut:LISN:FILTer:HPASs[:STATE].....	24
INPut:LISN:PHASe.....	24
INPut:LISN:TYPE.....	24

Index

A

Auto peak search 12, 18

C

CISPR Average 7
CISPR bandwidth 10, 16

D

Detector 7
Dwell time 14, 20

E

EMI detector 7
EMI marker 18
EMI marker evaluation 14, 21

F

Filter type (EMI) 10, 16
Final evaluation 14, 21
Frequency axis scaling 17

L

Limit lines 14
Linear scaling 17
LISN 11, 17
Logarithmic scaling 17

M

Manual peak search 12
Marker demodulation 14
Marker table 21
Marker wizard 18
Measurement time 20
MIL Std bandwidth 10, 17

P

Peak search 12, 18
Phase 11, 17

R

Resolution bandwidth (EMI) 10, 16
RMS Average 7

S

softkey

Detector Auto Select (remote control) 26
Detector Manual Select (remote control) 26
Filter Type 16
Filter Type (remote control) 25
Freq Axis (Lin/Log) (remote control) 23
Marker to Trace (remote control) 27
Range Lin. Unit (remote control) 23
Range Linear % (remote control) 23
Res BW (remote control) 25

Res BW Manual (remote control) 25
Sweep Points (remote control) 27

Softkey

Marker to Trace (remote control) 30
Sweep points 11

T

Transducer factor 12

V

V network 11, 17